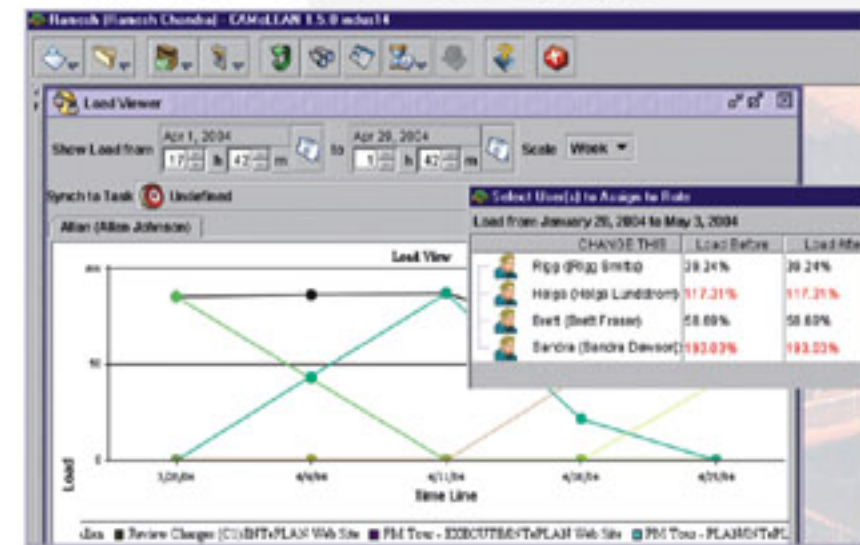


One framework to communicate and collaborate across your enterprise programs

A frequent need expressed is 'We want real-time information on all projects across programs from a single point'. CAMELEAN/PM not only provides, but also monitors project information in real-time from a single point. It is an enterprise class role-based program management solution that helps organizations manage programs across multiple locations and time zones. Its collaboration and communication backbone pro-actively alerts management to potential problem areas before they happen and identifies areas of project execution which need greater focus. It offers a rich toolset that enables alignment of project execution with corporate objectives, thus helping in making informed decisions. It is easily integrated into existing information systems.

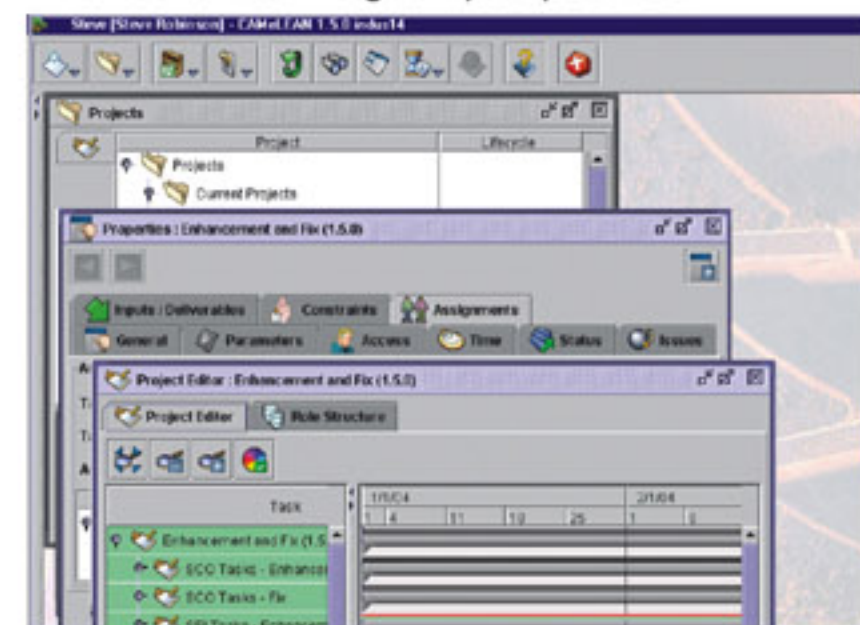
Resource Management

- Leverage resources across the enterprise
- Assign right resources to the right projects
- Measure productivity / identify shortages
- Predict resource / skill Requirements
- Analyze Resource utilization patterns
- Map organizational roles to program



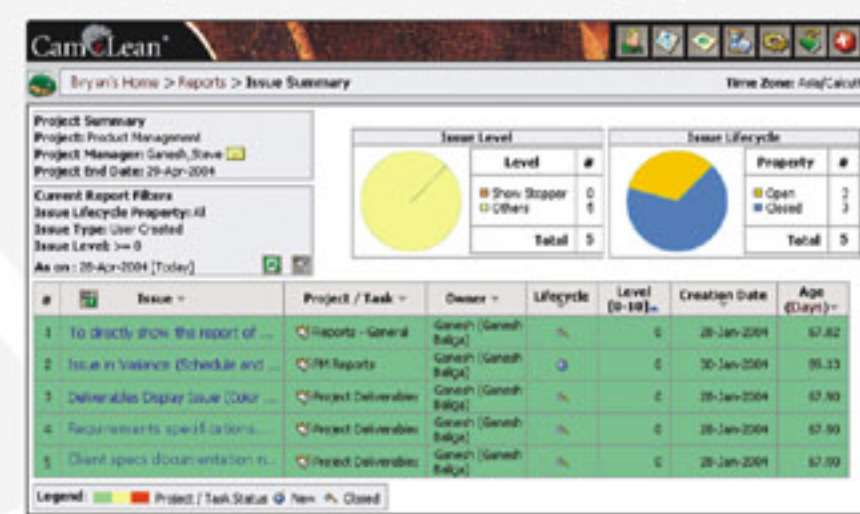
Program Management

- Plan and Execute Programs Faster
- Optimize resource utilization
- Track and pro-actively take corrective action
- Analyze issues and problem areas
- Unified program view across cross-functional teams
- Personalized Program perspectives



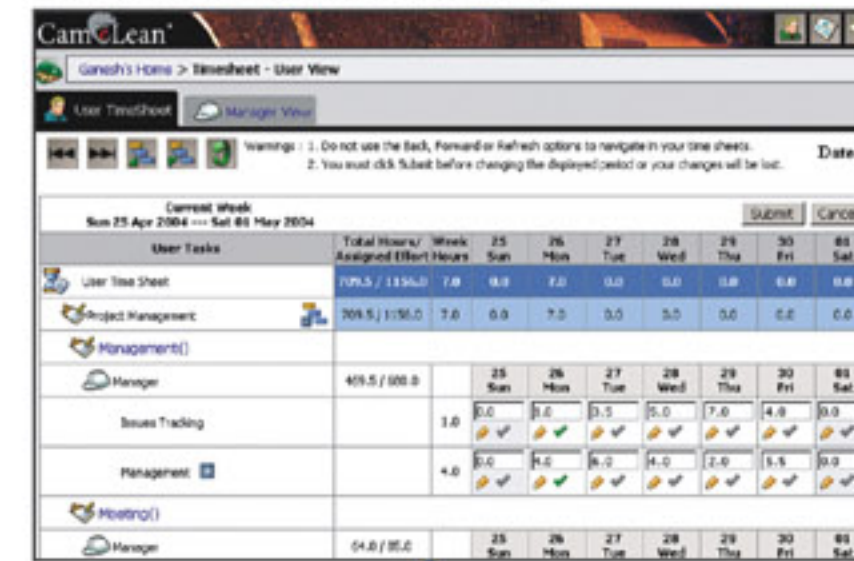
Issue Management

- Issue visibility to all stakeholders
- Escalation of critical issues
- Getting issue alerts in real time
- Resolving issues in a structured way
- Manage issues through its lifecycle engine
- Identify common issues across programs



Timesheet Management

- Very fast capture of time spent
- Time capture for planned tasks only
- Viewing of planned vs actual time spent
- Task time capture under many categories
- Simplified one-click approval process
- Automatic timesheet routing



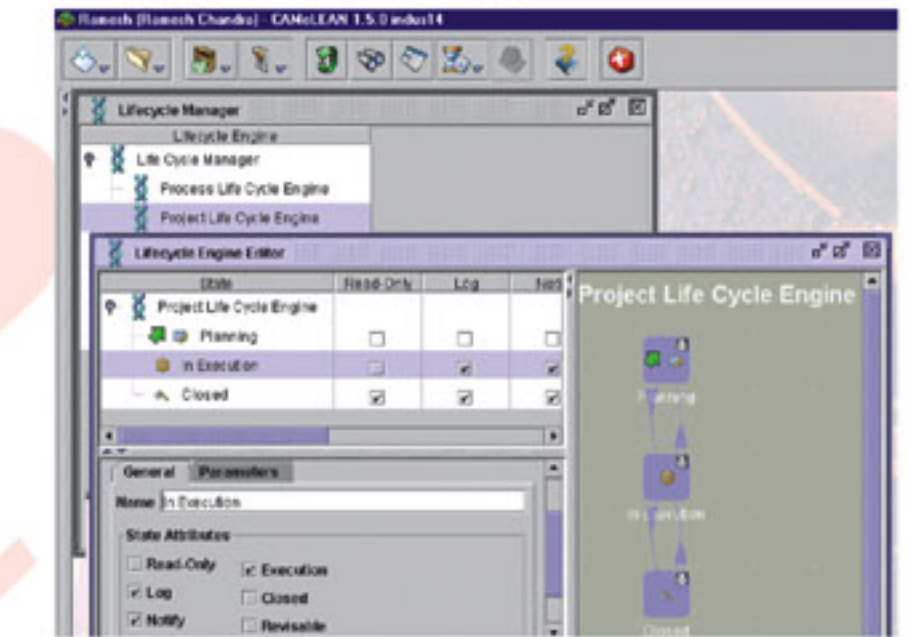
Deliverables Management

- Raises alerts on pending deliverables
- Share deliverables across locations
- Manages deliverables lifecycle
- Provides real-time information access
- Deliverables visible across the enterprise
- Identify deliverable bottlenecks



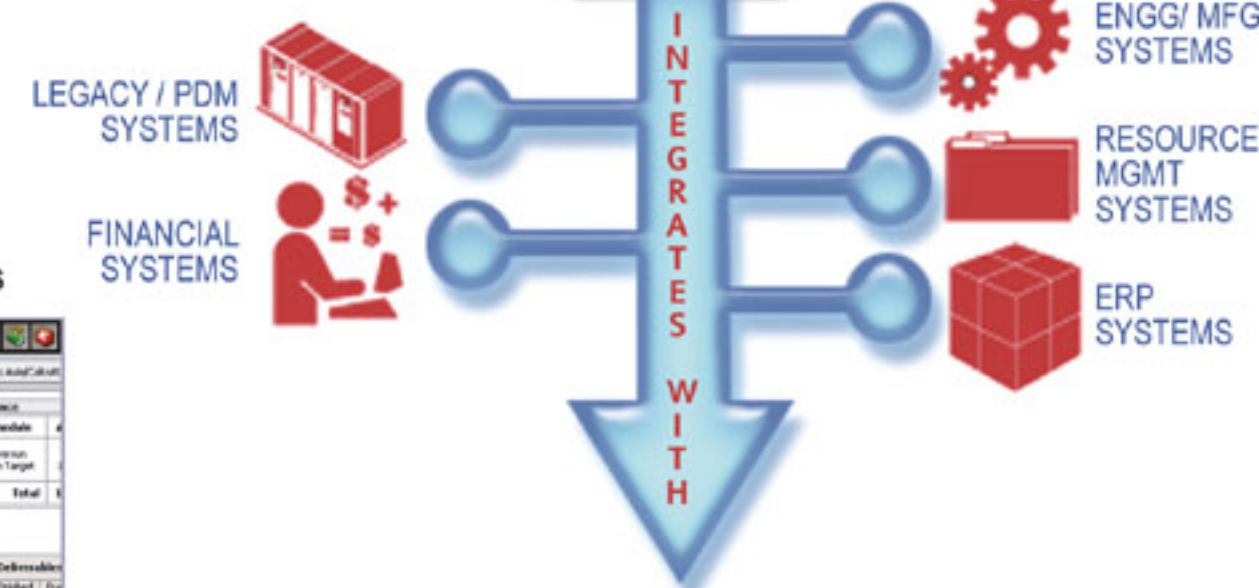
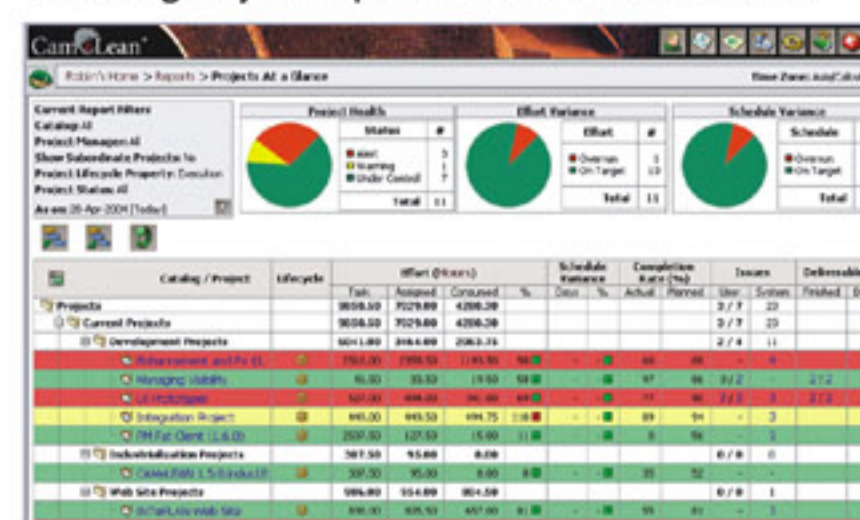
Lifecycle Management

- Manage the lifecycle of a process
- Take actions based on lifecycle changes
- Ensure process lifecycle accountability
- Create lifecycle libraries
- Support for quality process initiatives
- Reduce non-conformities



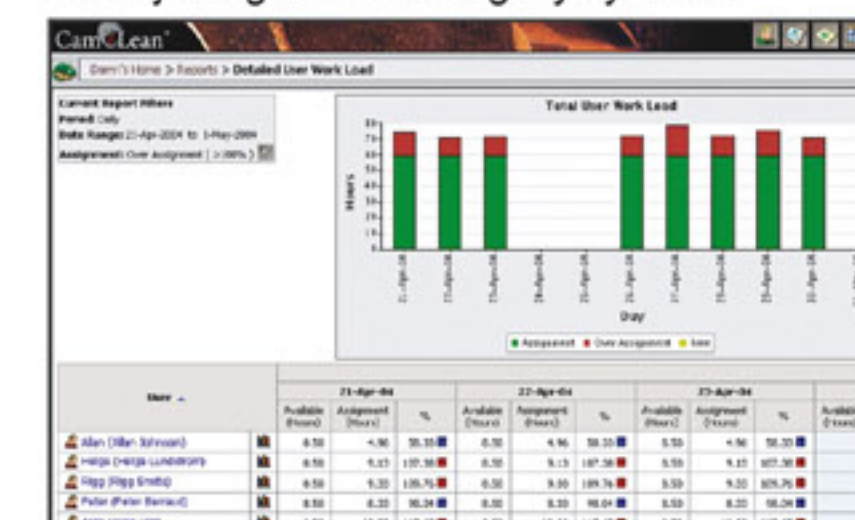
Portfolio Management

- Align programs with business objectives
- Track Program budget vs expenditure
- Prioritize projects for better ROI
- Get a global program perspective
- Collate project metrics into knowledge
- Manage by exception with visual indicators



Reports & Analysis

- Status and insight into problem areas
- Planned vs actual performance metrics
- Multi-level / Objective centric analysis
- Decision making support
- Real-time browser based report updates
- Easy integration with legacy systems



Team Collaboration & Knowledge Management

- Collaborate across multi-location, teams
- Capture and Reuse 'Best Practices'
- Make decisions with real-time information
- Bring transparency, accountability
- Involve external stakeholders in program
- Share knowledge across the enterprise

